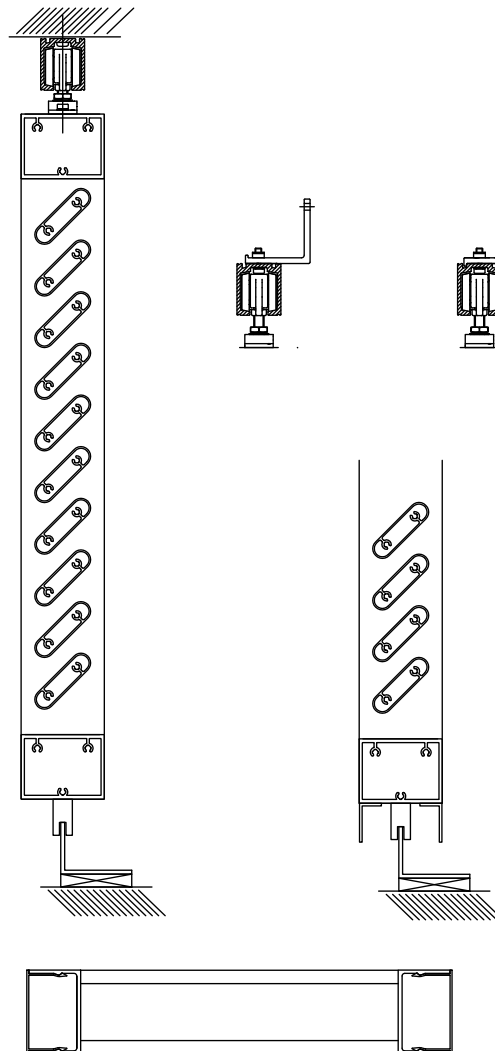


SHUTTERS TYPE ELIPSA - 1



PRODUCT DATA SHEET FOR SHUTTERS TYPE ELIPSA – 1

Profiles pressed from aluminium alloy: grade 6063T66
 In accordance with PN-EN 755-9 and PN-EN 573 part 1-4
 Tolerance U.N.E. PN-EN 12020
 Surface quality: powder coating to all RAL colours;
 natural anodising 15-20 um;
 raw aluminium

MAX DIMENSIONS : 1300 x 2800 mm

PRICE DEPENDS ON THE VOLUME OF ORDER

OFFER VALID FROM JUNE 2012. PREVIOUS OFFERS EXPIRE WITHIN THIS ONE. We reserve the right to change the scope of the offer

SOLAR-TECH Sp. z o.o.

ul. Biskupińska 23, 30-732 Kraków, Poland, tel. (+48 12) 290 04 06, 290 04 07, tel./fax. (+48 12) 653 22 68

TAX ID.NO. 675-12-16-850

Company Registry Number: 357036790

National Court Register: 0000147408